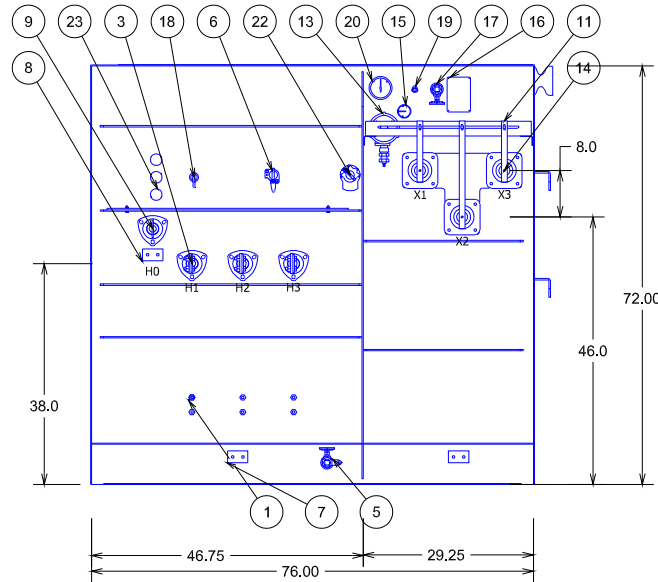
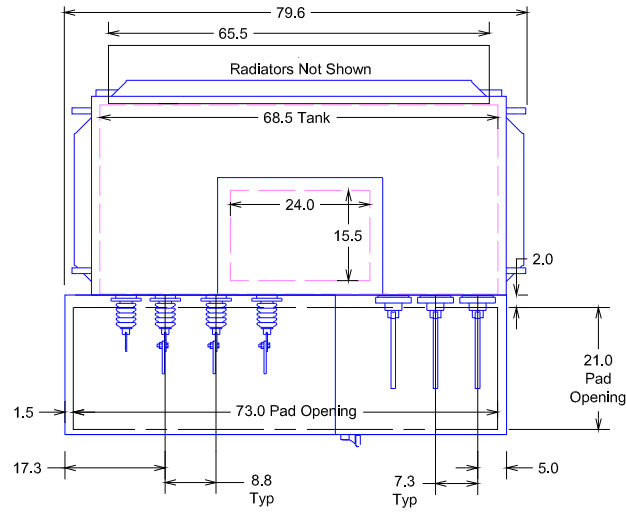


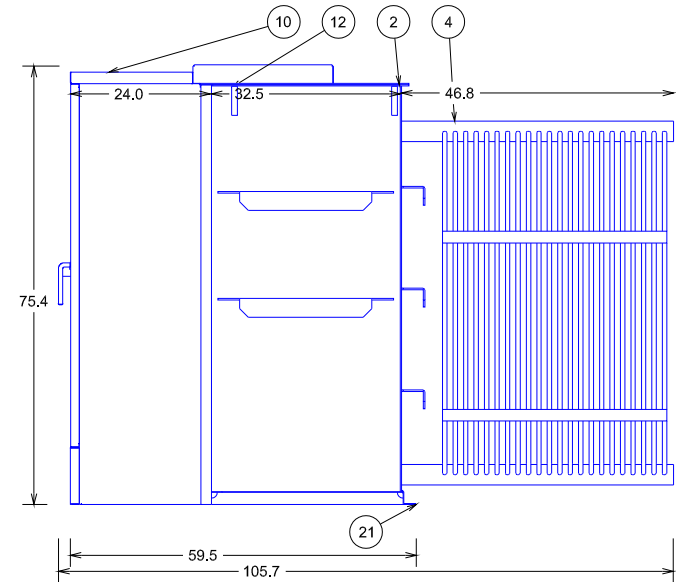
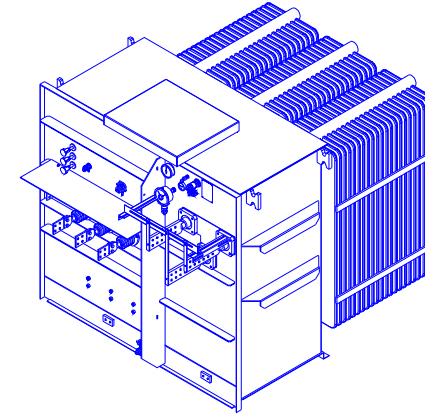
ITE	DESCRIPTION
1	Arrester Mounting Provision
2	Welded Cover w/ Handhole
3	15kV 600 Amp Porcelain HV Bushing w/ 4 Hole Spade
4	Cooling Radiators
5	Drain Valve with Sampler
6	Dual Voltage Switch
7	Ground Pad .50-13 Tap
8	Ground Pad .50-13 Tap
9	H0 Bushing
10	High Security Cabinet w/ Pentahead Door Bolts
11	LV Bushing Support
12	Lifting Lug
13	Liquid Temperature Gauge w/ Alarm Contacts
14	1.2kV LV Bushing w/12 Hole Spade Supported
15	Magnetic Oil Level Gauge
16	Nameplate
17	One Inch Upper Fill Valve
18	Two Position DY Switch
19	Pressure Relief Valve
20	Pressure Vacuum Gauge
21	Tank Base w/ Jacking and Rolling Facilities
22	5-Position Tap Changer
23	Under Oil Disconnect Switch
24	18.0kV (15.3kV MCOV) Arrester (Internal)




3PH Padmount Transformer 60Hz
2500.0 kVA ONAN 65 AWR Mineral Oil
HV 2400/4160Y/2400X7200/12470Y/7200 95 kV BIL
LV 480D 30 kV BIL
5.74 %IZ
Munsell Green Topcoat
Mild Steel Construction
UL Listed

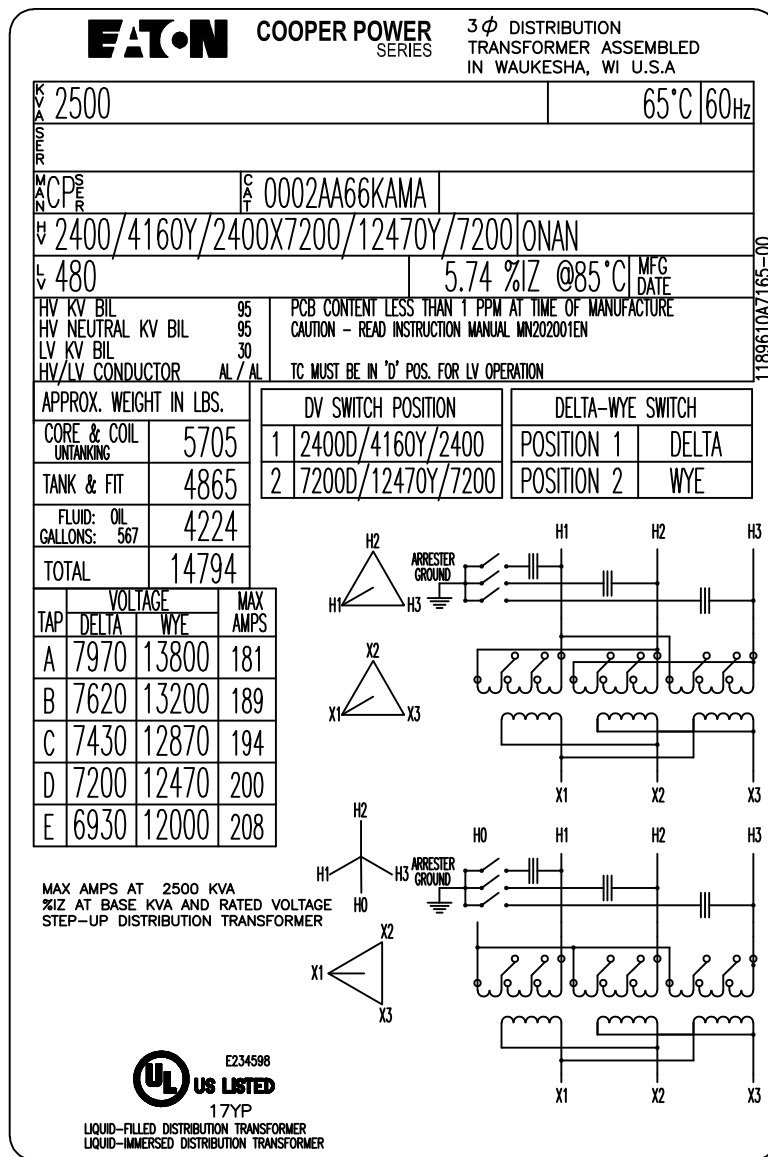
SO 212671119
PO 37727
Customer Name PHILIPS BROTHERS ELECTRICAL

Cabinet Removed



0002AA66KAMA
REVISIONS

MATERIAL:					
ALL DIMENSIONS ARE IN INCHES [MM]		TITLE: Distribution Transformer Outline Drawing DESC: COOPER POWER SERIES THREE-PHASE PAD-MOUNTED COMPARTMENTAL TYPE			
DWG: PTP	DATE: 12/14/2017	REF: P3D V03R08M09	SHEET #: 1 OF 1	SCALE:	REV: 00
THIS DRAWING HAS BEEN GENERATED FROM A 3D MODEL.		0002AA66KAMA			



- NOTES: 1) ACTUAL PLATE IS A NEGATIVE OF THE ABOVE DRAWING.
2) ACTUAL %IZ TO BE STAMPED IN AFTER TESTING.


NAMEPLATE MATERIAL: ALUMINUM

212671119,12

1189610A7165

REVISIONS

MATERIAL:		EAT•N Powering Business Worldwide	
ALL DIMENSIONS ARE IN INCHES [MM]		TITLE: LASER NAMEPLATE	
THE INFORMATION ON THIS DOCUMENT WAS CREATED BY EATON. IT WAS DISCLOSED IN CONFIDENCE AND IS ONLY TO BE USED FOR THE PURPOSE IN WHICH IT WAS SUPPLIED.		DESC: COOPER POWER SERIES 0002AA66KAMA	
DWG: PTP	DATE: 12/17/2017	REF:	SHEET #: 1 of 1
			SCALE: 1=1
			REV: 00
1189610A7165			

MATERIAL:	 EATON <i>Powering Business Worldwide</i>			
ALL DIMENSIONS ARE IN INCHES[MM]				
THE INFORMATION ON THIS DOCUMENT WAS CREATED BY EATON. IT WAS DISCLOSED IN CONFIDENCE AND IS ONLY TO BE USED FOR THE PURPOSE IN WHICH IT WAS SUPPLIED.	TITLE: SCHEMATIC LT DESC: COOPER POWER SERIES 3PH PAD			
DWG: PTP	DATE: 04/07/15	REF:	SHEET #: 1 of 1	SCALE: 1=1
			REV: 00	
	<div style="text-align: center; font-size: 2em; font-weight: bold;">4257572C0016</div>			